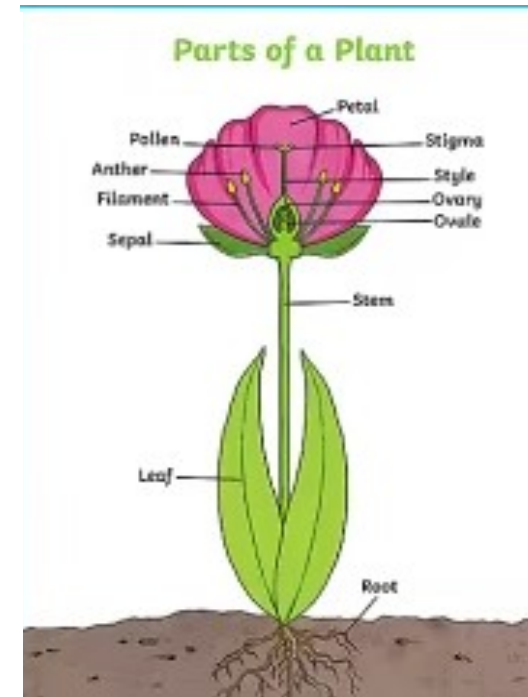
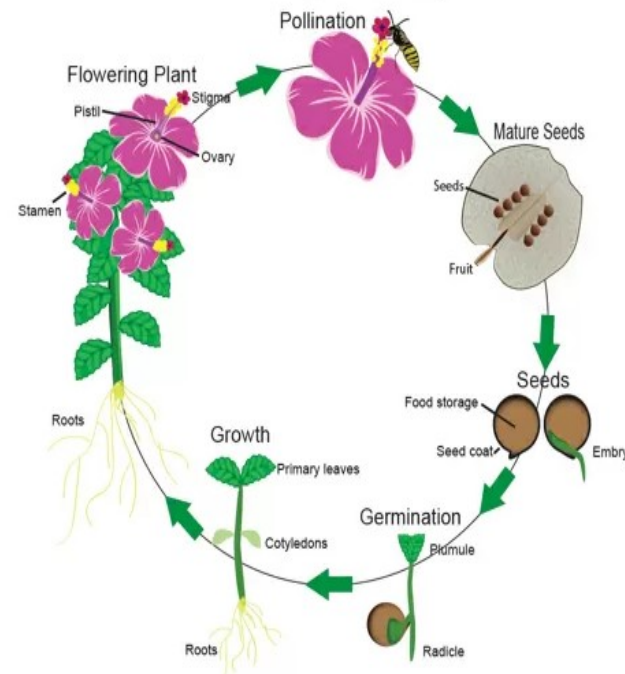


	the pollen tube by the pollen grain .
Stamen	The pollen producing part of a flower.
Pollination	The transfer of pollen from the male part of the plant to the female part of a plant.
Transport	Take or carry something from one place to another.
Nutrients	A substance that provides nourishment.
Germ	Tiny organisms or living things that can cause disease.

Key Questions

- What do plants need to grow?
- What are the names of the different parts of a plant?
- Why must we wash our hands?
- What is the process in which plants make their food?
- How is water transported in plants?
- What is the life cycle of a flowering plant?
-

ety of common flowering plants, including trees.



Working Scientifically

- Identify and describe the functions of different parts of flowering plants: roots, stem/trunk, leaves and flowers
- Explore the requirements of plants for life and growth (air, light, water, nutrients from soil, and room to grow) and how they vary from plant to plant
- Investigate the way in which water is transported within plants
- Explore the part that flowers play in the life cycle of flowering plants, including pollination, seed formation and seed dispersal.



Vocabulary	
Word	Definition
Fertilisation	The process of fusion of the female gamete, the ovum or egg and the male gamete produced in the pollen tube by the pollen grain .
Stamen	The pollen producing part of a flower.
Pollination	The transfer of pollen from the male part of the plant to the female part of a plant.
Transport	Take or carry something from one place to another.
Nutrients	A substance that provides nourishment.
Germ	Tiny organisms or living things that can cause disease.

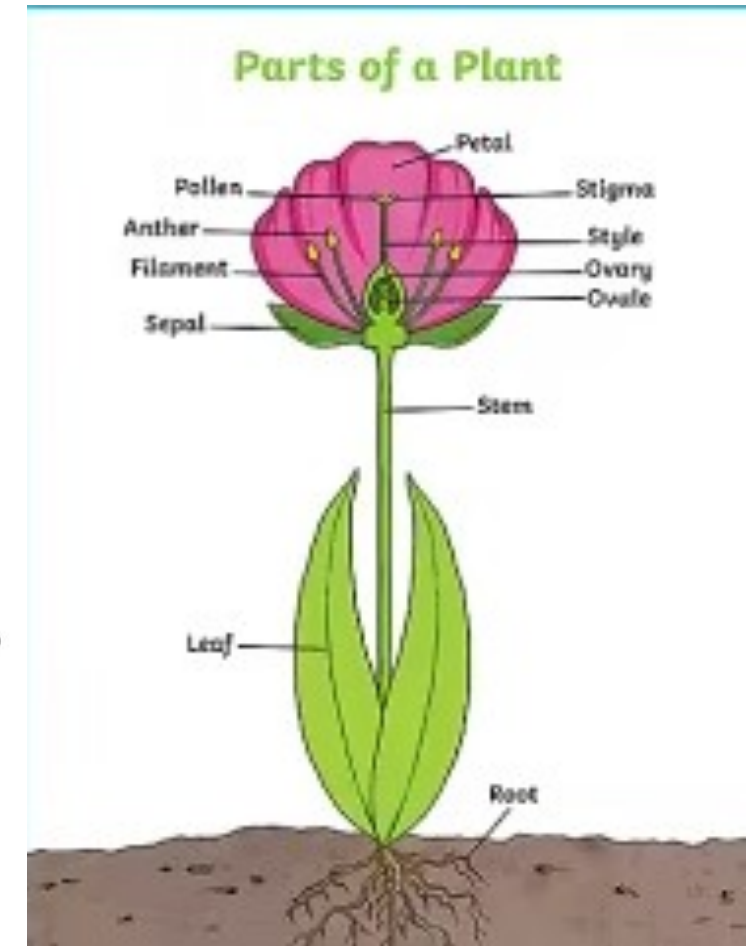
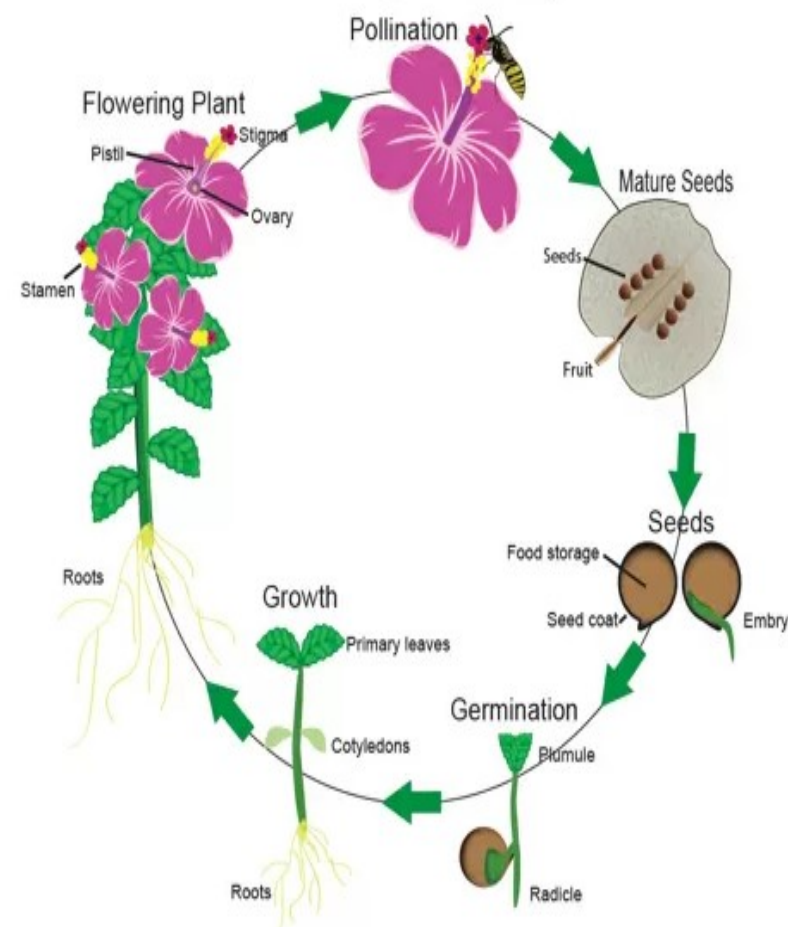
Previous Knowledge

In Year 1 you learnt:

- To identify and name a variety of common wild and garden plants, including deciduous and evergreen trees
- To identify and describe the basic structure of a variety of common flowering plants, including trees.

In Year 2, you learnt:

- To observe and describe how seeds and bulbs grow into mature plants
- To describe how plants need water, light and a suitable temperature to grow and stay healthy.



Key Questions

- What do plants need to grow?
- What are the names of the different parts of a plant?
- Why must we wash our hands?
- What is the process in which plants make their food?
- How is water transported in plants?
- What is the life cycle of a flowering plant?

Working Scientifically

- Identify and describe the functions of different parts of flowering plants: roots, stem/trunk, leaves and flowers
- Explore the requirements of plants for life and growth (air, light, water, nutrients from soil, and room to grow) and how they vary from plant to plant
- Investigate the way in which water is transported within plants
- Explore the part that flowers play in the life cycle of flowering plants, including pollination, seed formation and seed dispersal.